

This elegant garden pavillion provides both a calm retreat and a summer entertaining space

46 HOUSE

STERRIN O'SHEA ARCHITECTS

1 Phoenix Terrace
Blackrock
County Dublin
www.sosa.ie

Published in:
House
Summer 2007
"Garden Pavilion"
page 1/4



GARDEN PAVILION

AN OUTDOOR ROOM IN DUBLIN

The owners of this elegant garden pavilion are keen gardeners and were looking for a tranquil space to escape to from their main family home. The room also had to be large enough if they wanted to entertain guests there in the summertime. As they sought a bespoke design solution, they commissioned young Dublin architect Sterrin O'Shea.

To identify the best location for a self-contained garden pavilion, O'Shea surveyed the grounds and studied the orientation. In the far north-eastern corner of the garden, she found a site that would not only take advantage of south-west light well into the long summer evenings but also had the best views of the garden. The pavilion sits between two trees, a birch and an oak, nestled away from the hustle and bustle of the main house - a room to reflect. When viewed from the main house, which is at a higher level, the pavilion disappears into the garden.

Clad in Siberian Larch on all sides (including the roof), the pavilion has been designed with great restraint in form and materials. It takes the form of a simple cube with a deck of equal proportions. Both pavilion and deck are elevated to float over the garden rather than to impose. The 3-metre high Siberian Larch doors slide open back from the corner, allowing the pavilion to be used as an outdoor room when weather permits. The clever design and construction also will facilitate the removal and recycling of this light-weight timber structure in the future.

Inside, the pavilion is lined with an inner 'skin' of plywood, which has been stained red and lacquered with a satin finish. This adds an unexpected luxurious feeling despite the simplicity of the materials. A deep wall within the thickness of this inner 'skin' conceals the kitchenette, a storage unit and the book shelves. A carefully placed roof light allows morning (east) light to enter between the narrow plywood fins. The soft play of light illuminates the panelled back wall, which acts as a backdrop for the shadow of the trees.

Although this is a building of utter simplicity, architect Sterrin O'Shea placed much emphasis on design details such as breaking up the panelling, ceiling, doors and shelving by using a 600-mm module. The kitchen countertop is made from caroli red quartzite. The material continues - as if it has been folded - under the units to reinforce the work space around the sink area. The architect also carefully concealed lighting in the form of vertical and horizontal 'strip lamps' between the two timber skins. Through this imaginative use of light, the pavilion is turned into a magnified garden lantern at night.

Photography: Marie Louise Halpenny

HOUSE 47

STERRIN O'SHEA ARCHITECTS

1 Phoenix Terrace
Blackrock
County Dublin

www.sosa.ie

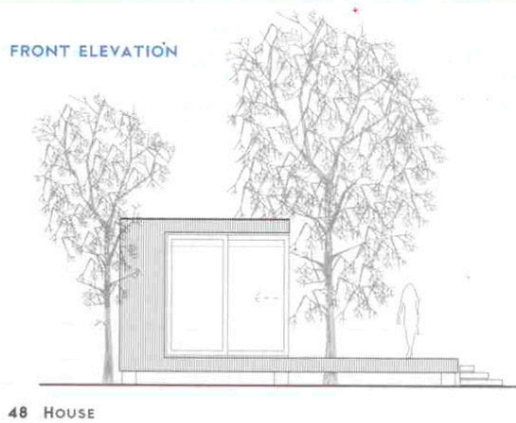
Published in:

House
Summer 2007
"Garden Pavilion"

page 2/4



FRONT ELEVATION



48 HOUSE

SIDE ELEVATION



STERRIN O'SHEA ARCHITECTS

1 Phoenix Terrace
Blackrock
County Dublin
www.sosa.ie

Published in:

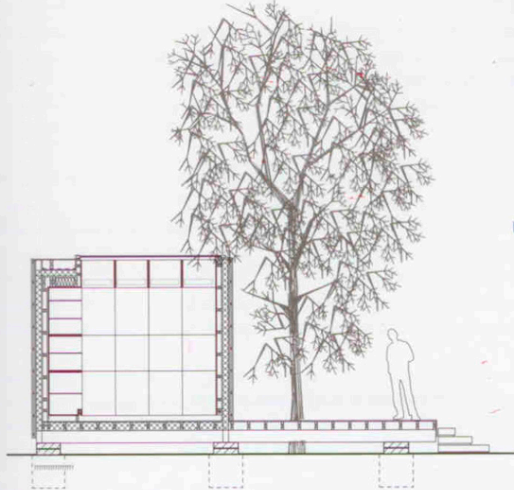
House
Summer 2007
"Garden Pavilion"
page 3/4



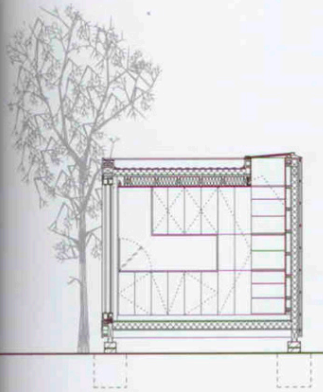
PAVILLION PLAN

Pavillion plan

- 1 kitchen
- 2 interior
- 3 deck



LONG SECTION



CROSS SECTION

Architects: Sterrin O Shea Architects



1 Phoenix Terrace
Blackrock
Co Dublin

T 01 2143315
E sterrinoshea@sosa.ie
www.sosa.ie

Sterrin O'Shea established her own practice in 2005. After graduating from DIT Bolton Street she spent 9 years working with Grafton Architects, FKL and Murray O'Laoire in Dublin and Engelen Moore in Sydney, Australia.

The aim of the practice is to provide high quality bespoke design solutions for each project. The key focus is to maximise the use of light and create a flexible living environment. There is a strong emphasis on detailing throughout the design stage to ensure a high quality finish on completion. Currently the practice is involved in the design of mixed use schemes, one-off houses together with refurbishments and extensions to period homes.

PROJECT FACTS

Size of Project (Pavilion and Deck): 20m²

Main Contractor: MeisterWerk Ltd.

Decking, Cladding and Windows: Siberian Larch, supplied by Meisterworks

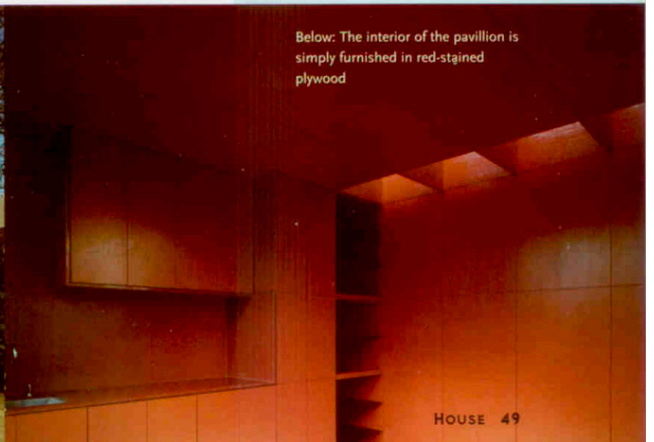
Internal lining: Red lacquered plywood by Meisterwerk

Countertop: Caroli red Zodiac Quartzite supplied by Meisterwerk

Floor: Siberian Larch



Below: The interior of the pavilion is simply furnished in red-stained plywood



HOUSE 49

STERRIN O'SHEA ARCHITECTS

1 Phoenix Terrace
Blackrock
County Dublin
www.sosa.ie

Published in:

House
Summer 2007
"Garden Pavilion"

page 1/4