

GARDEN ROOMS / EXTENSIONS

Top to bottom

An Edwardian house in Rathgar has been extended
outwards and upwards by Sterrin O'Shea Architects

48 HOUSE

STERRIN O'SHEA ARCHITECTS

1 Phoenix Terrace
Blackrock
County Dublin
www.sosa.ie

Published in:

House
Autumn/Winter 2008
"Top to Bottom" Rathgar House

page 1/5





STERRIN O'SHEA ARCHITECTS

1 Phoenix Terrace
Blackrock
County Dublin
www.sosa.ie

Published in:

House
Autumn/Winter 2008
“Top to Bottom” Rathgar House
page 2/5

This handsome Edwardian house in one of Dublin's historic suburbs, Rathgar, has been thoroughly remodelled and extended – from the attic eaves to the rooms at garden level – to create additional living space for a couple and their three teenage daughters. The family residence forms part of a row of semi-detached red brick houses dating back to c.1905. Though not protected, the two-storey over garden level house retains many original features including fireplaces, decorative cornicing, centrepieces and elaborate panelling around windows, which had to be preserved in the renovation process.

For architect Sterrin O'Shea the challenge was to explore the relationship between 'old and new' and to successfully create a garden room that not only links the rear to the main house but also connects with the garden. It was critical that the new extension would work with the main house in a sympathetic way without blocking natural daylight.

On entering the newly refurbished house, one is immediately drawn through the somewhat dark hall, via a new pivot door, by the immense light and the view of the recessed lush garden beyond. Great care was taken by the architect to ensure that it is possible to see the rear garden when standing at the dining room patio doors, as the roof to the new rear extension is stepped, giving the impression of infinite glass over the main structural beam. The architect also suggested an elevated courtyard, which allows light into the original dining room and provides direct access from the new kitchen. This new external 'room' now connects these two spaces with the garden room.

Right: Large glass doors allow easy access and flow between the new living space and the garden

Below: The new interior courtyard allows light into the kitchen



STERRIN O'SHEA ARCHITECTS

1 Phoenix Terrace
Blackrock
County Dublin
www.sosa.ie

Published in:

House
Autumn/Winter 2008
"Top to Bottom" Rathgar House
page 3/5



Practical storage space was a priority for this family of five and architect Sterrin O'Shea found clever ways to achieve this: a continuous storage wall acts as a link between old and new. It begins under the main stairwell, accommodating a WC and cloakroom, and extends into the kitchen concealing the mechanical appliances (gas boiler, water cylinder, manifolds) together with laundry facilities and larder presses. The storage wall continues into the rear extension, and terminates in the form of a study desk.

The real surprise lies, however, in the new attic mezzanine. The architect had initial concerns about developing the attic as the head height was considerably restricted due to the low pitch of the main roof, especially when compared to the generous proportions of the main house. Rather than make a separate room, Sterrin O'Shea suggested the creation of a mezzanine room overlooking the main stairwell. Access hatches to storage in the eaves are hidden along the birch veneered panelled walls. Lighting is concealed beneath this, illuminating the marmoleum grey floor.

The access to the new attic room provided a challenge due to the potential impact on the generous height of the existing landing, though this was surprisingly dark. Roof lights were fitted to the main roof and the roof over the return to channel maximum natural daylight either side of the new stairs deep into the main stairwell and hall. Rather than extend the original stairwell up to the attic in a pastiche fashion, the architect designed a new stainless steel and American White Oak stairs which folded down.

Photography: Marie-Louise Halpenny

Left: Storage was a priority and the architect designed a continuous storage wall which conceals all appliances

Below: Storage in the roof space is in the birch veneered panelled walls



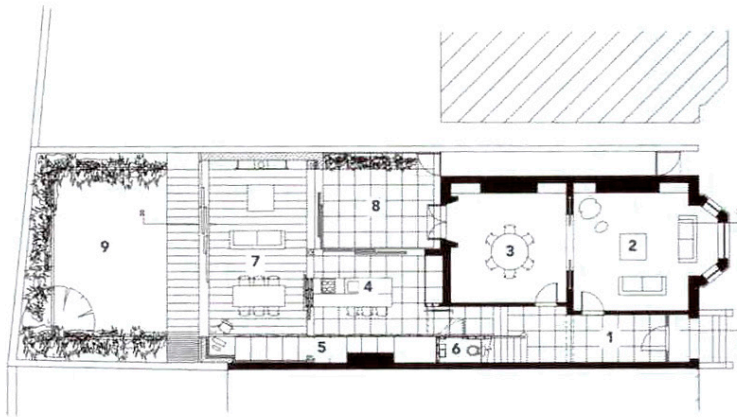
HOUSE 51

STERRIN O'SHEA ARCHITECTS

1 Phoenix Terrace
Blackrock
County Dublin
www.sosa.ie

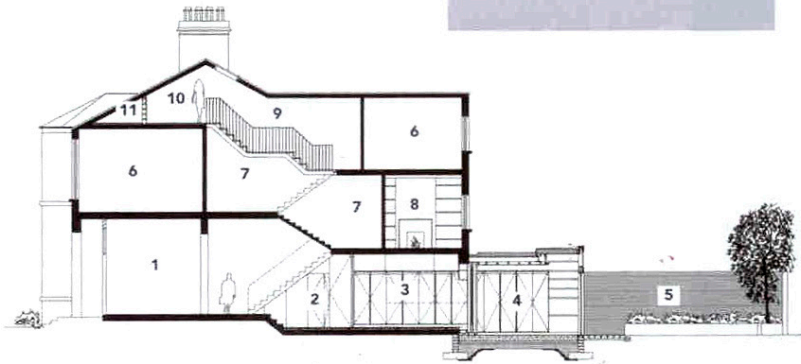
Published in:

House
Autumn/Winter 2008
"Top to Bottom" Rathgar House
page 4/5



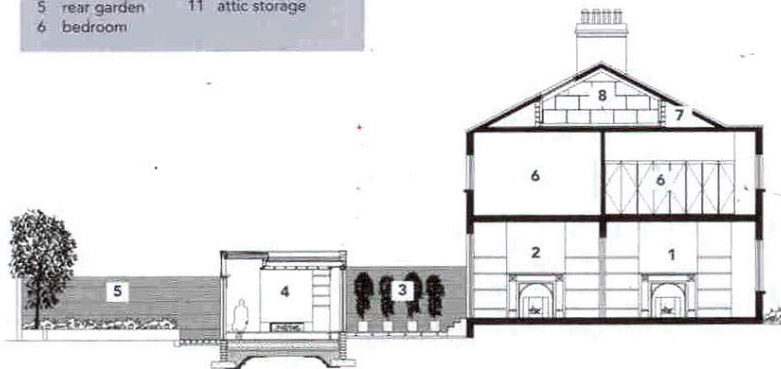
ground floor plan

key			
1	hall	6	wc
2	living room	7	living/dining
3	dining room	8	courtyard
4	kitchen	9	rear garden
5	storage wall		



section

key			
1	hall	7	landing
2	wc	8	bed 4/study
3	kitchen	9	new steel stairs
4	living/dining	10	attic/mezzanine
5	rear garden	11	attic storage
6	bedroom		



section

key			
1	living room (existing)	5	garden
2	dining room (existing)	6	bedroom
3	courtyard (new)	7	attic storage
4	living/dining (new)	8	attic room



Architects:
Sterrin O'Shea Architect

1 Phoenix Terrace, Blackrock,
Co. Dublin
T 01 214 3315
M 087 123 2540
E sterrinoshea@sosa.ie

Sterrin O'Shea established her own practice in 2005. After graduating from DIT Bolton Street she worked with Grafton Architects, FKL and Murray O Laoire in Dublin and Engelen Moore Sydney, Australia. The aim of the practice is to provide high quality bespoke design solutions for each project. The key focus is to maximise the use of light and create a flexible living environment. There is a strong emphasis on detailing throughout the design stage to ensure a high quality finish on completion. Currently the practice is involved in the design of mixed use schemes, one-off houses together with refurbishments and extensions.

Project Facts

Main Contractor
Brian Leach Construction

Quantity Surveyor
Andrew Nugent & Associates and
Tom Phelan & Associates

Structural Engineers
Casey O'Rourke Engineers

Looking for more inspiration and ideas? Then
log on to architecturenw.ie/houses